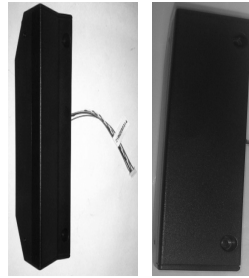


# SA-104/105/SL-104/105 USER'S MANUAL

Rev. : A0

**POSIFLEX**



## I. FEATURES

- ISO 7811 Magnetic Stripe Reader 3 tracks in USB full speed HID interface.
- Option ISO ID-Tech encrypted Magnetic Stripe Reader.
- Can read AAMVA and CA DMV card.
- Total power consumption: 50 mA @ 5V DC.
- For integration in XT-3015/4015/3014 series with SA-105/104 on Posiflex POS touch terminal systems.
- For integration in LM-3014/3015 series with SL-104/105.
- Included with Posiflex USB MSR manager to fit tailored needs.

### FCC NOTICE

This equipment generates, uses, and can radiate radio frequency energy and, if not installed and used in accordance with the instructions manual, may cause interference to radio communications. It has been tested and found to comply with limits for a Class A digital device pursuant to subpart J of Part 15 of FCC Rules, which are designed to provide reasonable protection against interference when operated in a commercial environment. Operation of this equipment in a residential area is likely to cause interference in which case the user at his own expense will be required to take whatever measures to correct the interference.

### WARRANTY LIMITS

Warranty will terminate automatically when the equipment is opened by any person other than the authorized technicians. The user should consult his/her dealer for the problem happened. Warranty voids if the user does not follow the instructions in application of this merchandise. The manufacturer is by no means responsible for any damage or hazard caused by improper application.

The hardware utility program, including instructions for its use, is provided "AS IS" without warranty of any kind. Posiflex Technology Inc. further disclaims all implied warranties including without limitation any implied warranties of merchantability or of fitness for a particular purpose. The entire risk arising out of the use or performance of the software and documentation remains with you.

### ABOUT THIS MANUAL

This manual is written in an attempt with full strength to assist the user to utilize the security upgrade kit SA-104/105/SL-104/105 for the Posiflex touch terminal systems. This series of products incorporate 2 delicately designed POS peripherals each can be used as an excellent tool to accommodate the required security specially involved in POS business, kiosk and hospitality operation. This manual covers the conceptual and operational aspects of these units. For technical aspects involving opening of the unit or option implementation, it is only available to the authorized distributors.

The manufacturer of the SA-104/105/SL-104/105 heartily apologizes to the user for reserving the right to change or to modify this manual without notice due to the rapid and constant progress and improvement on science and technology. The user may always obtain the most up to date information through any of our web sites: <http://www.posiflex.com> or <http://www.posiflex.com.tw>.

© Copyright Posiflex Technology Inc. 2013

All rights are strictly reserved. No part of this documentation may be reproduced, stored in a retrieval system, or transmitted in any form or by any means, electronic, mechanical, photocopying, or otherwise, without the prior written consent of Posiflex Technology Inc. the publisher of this documentation

### TRADE MARKS AND SERVICE MARKS

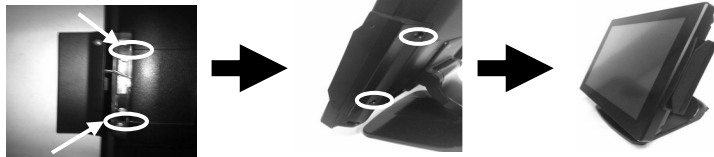
CE POSIFLEX is a registered trademark of Posiflex Technology Inc., an ISO-9001 and ISO-14001 certified manufacturer. P/N: 18600900020  
Other brand and product names are trademarks and registered trademarks and service marks of their respective owners.

## II. INSTALLATION

### 1. HARDWARE INSTALLATION

SA-104/105/SL-104/105 is a USB MSR attachment. SA-104 is for XT-3114 and SA-105 is for XT-3015/4015 terminal series. SL-104 is for LM-3014/XT-2614 and SL-105 is for LM-3015 monitor.

#### SA-104/105 Installation



**Step A:** Remove these 2 screws to remove the side mount cover on the back of the right side mount upgrade kit.

**Step B:** Take out the cable inside this side mount cover as circled in below picture and connect the SA-104/105 cable to the indicated one of 2 connectors fixed on the main board inside the side mount cover of XT-3114 and XT-3015/4015.

**Step C:** Gently arrange the excessive length of this cable back in the hole and use the 2 original screws to fit SA-104/105 back to the position originally occupied by the cover. Please reserve the cover if there is a chance to have the side mount kit removed in the future.

For SL-104/105 series ordered with the LM-14" & 15" host system, it is separately delivered from the system at delivery and needs to be fixed onto the system per the following instructions before use.

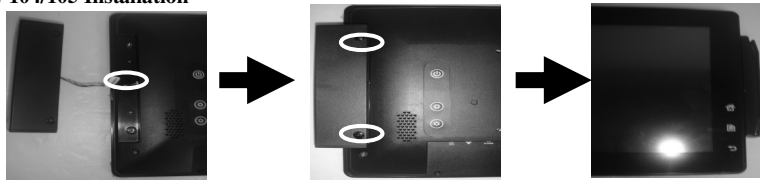
**Step A:** Remove the 2 circled screws in the below picture to remove the side mount cover on the back of the right side mount upgrade kit.

**Step B:** Take out the cable inside this cover as circled in the below picture and connect the SL-104/105 cable to the indicated one of the 2 prolonged connectors inside the side mount upgrade kit as indicated.



**Step C:** Gently arrange the excessive length of this cable back in the hole and screw-fit it back to the position originally occupied by the cover. Please reserve the cover if there is chance to have the side mount kit removed in the future.

#### SL-104/105 Installation



## 2. SOFTWARE CONFIGURATION

To customize country specific requirements or meet tailor-made needs, Posiflex USB MSR Manager gives an accessible interface below while factory installed. The SA-105/SA-104/SL-104/105 is not required to function synchronously with MSR program to enable card reading. User is also required not to modify any settings on this program except that specific or tailor-made changes are essential for card reading alternatives.



## 3. DRIVER INSTALLATION

**For USB MSR:** The magnetic stripe reader in SA-104/SA-105/SL-104/105, USBMR: USB 1.1 Full-Speed type, HID Keyboard Emulation Class, no matter how many tracks are in the reader head, connect to the host through USB port. It operates as a USB KB and therefore requires no driver installation. You only need to set the USB keyboard to be enabled in system CMOS setup if the OS does not do it automatically. Refer to "Operation Guide" for manipulation over the reader configuration.

### III. OPERATION GUIDE

#### 1. MAGNETIC STRIPE READER

The MSR in SA-105/104/SL-104/105 reads an ISO magnetic stripe card without driver. Yet, there is a "Posiflex USB MSR Manager" Ver. 2.08 above program provided to control some parameter configuration for this MSR. In DOS operating system mode, MSR manager works best with USB keyboard support available in BIOS environment. Similarly, MSR manager works poorly with DOS mode, if Windows mode is enabled. Except that **Sending Leading/Ending Codes** is defaulted for enabling, the features controllable in this program cover each track enable/disable, Alt+Num approach for ASCII codes. Please find in the mini CD delivered with SA-105/104/SL-104/105 or Product Information CD delivered with Posiflex POS system the folder for "USBMSR" and "Set Up" this official Manager program or download the installation program from our web <http://www.posiflex.com> or <http://www.posiflex.com.tw>.

#### I. OPERATION GUIDE

The MSR in SA-105/104/SL-104/105 series reads an ISO magnetic stripe card without additional device driver and its icon can be viewed accordingly in **Windows Device Manger** program. For magnetic stripe card reading, be sure to insert the card to the bottom with magnetic stripe facing the mark aside the slot. The movement of the card can be either inserting the card from the top surface then sliding the card down out of the slot, or sliding the card upward from the lower side of the slot till it reaches the top end as long as the card is a standard one. A non-standard card recorded without complete degaussing prior to recovery may accept only one direction in card reading.